



**DOCUMENTO DI IDENTIFICAZIONE / IDENTIFICATION FORM**

Marca	<i>Make</i>	<b>EXTREME</b>
Modello	<i>Model</i>	<b>MIG RK125W A</b>
Tipo Ammissione	<i>Inlet type</i>	<b>LAMELLARE / LAMELLAR</b>
Nombre de pages	<i>Number of pages</i>	<b>6</b>



FOTO DEL MOTORE LATO PIGNONE  
 PHOTO OF DRIVE SIDE OF ENGINE

FOTO DEL MOTORE LATO ACCENSIONE  
 PHOTO OF IGNITION SIDE OF ENGINE

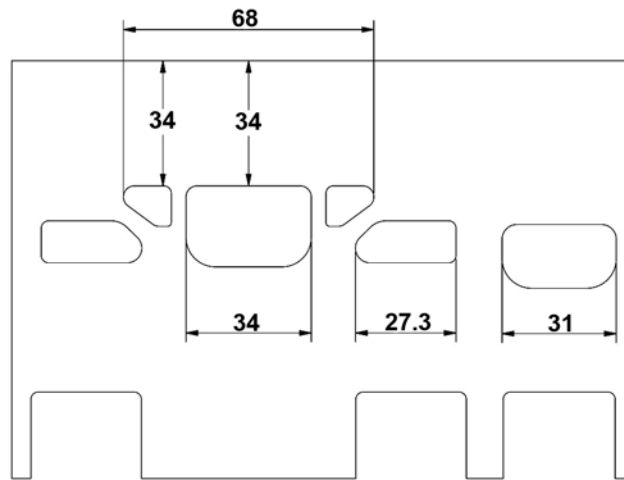
INFORMAZIONI TECNICHE		TECHNICAL INFORMATION	
CARATTERISTICHE		CHARACTERISTICS	
			Tolérances
Cilindrata	<i>Volume of cylinder</i>	<b><u>122,3 CM3</u></b>	<b><u>&lt; 100cm<sup>3</sup></u></b>
Alesaggio originale	<i>Original Bore</i>	<b><u>53,7 MM</u></b>	
Alesaggio teorico massimo	<i>Theoretical maximum bore</i>	<b><u>53,95 MM</u></b>	
Corsa	<i>Stroke</i>	<b><u>54 MM</u></b>	
Sistema di raffreddamento	<i>Cooling system</i>	<b><u>ACQUA / WATER</u></b>	
Numero dei travasi	<i>Number of transfer ducts, cylinder/sump</i>	<b><u>3</u></b>	
Numero delle luci di scarico	<i>Number of exhaust ports / ducts</i>	<b><u>3</u></b>	
Interasse biella	<i>Length between the axes of the connecting rod</i>	<b><u>100 MM</u></b>	±0.1mm
Peso della biella	<i>Weight of the connecting rod</i>	<b><u>120 GR</u></b>	minimum
Peso dell'albero motore	<i>Weight of the crankshaft</i>	<b><u>1900 GR</u></b>	minimum
Volume della camera di scoppio	<i>Volume of combustion chamber</i>	<b><u>9,5 CM3</u></b>	minimum
Numero dei segmenti pistone	<i>Number of piston rings</i>	<b><u>1</u></b>	
Carburatore	Carburettor	<b><u>TILLOTSON HF360A</u></b>	
Accensione	Ignition	<b><u>OPPAMA</u></b>	

FASATURA		OPENING ANGLES	
Scarico	<i>Exhaust</i>	<b><u>175°</u></b>	Maximum
Travaso	<i>Transfer ducts</i>	<b><u>130°</u></b>	Maximum

MATERIALI		MATERIAL	
Cilindre	<i>Cylinder</i>	<b><u>ALUMINIUM</u></b>	
Culasse	<i>Cylinder head</i>	<b><u>ALUMINIUM</u></b>	
Carter	<i>Sump</i>	<b><u>ALUMINIUM</u></b>	
Bielle	<i>Connecting rod</i>	<b><u>ACCIAIO / STEEL</u></b>	

SVILUPPO DEL CILINDRO

*DRAWING OF THE CYLINDER DEVELOPMENT*

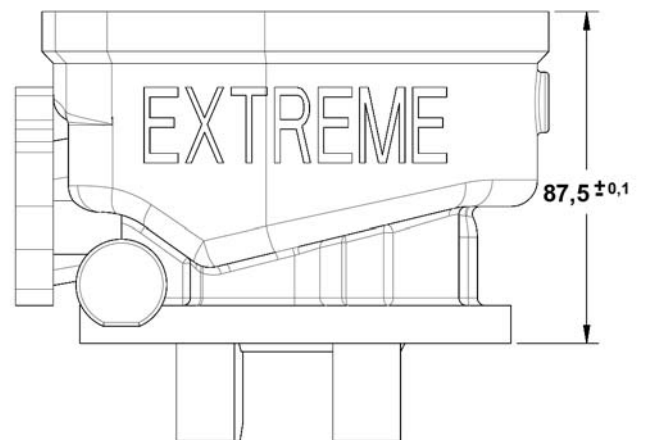
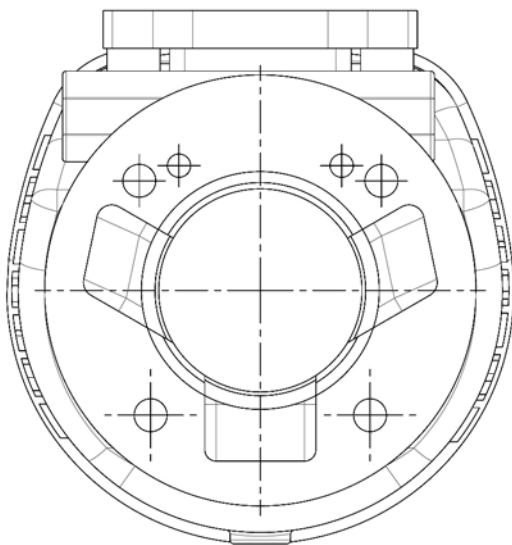


BASE CILINDRO

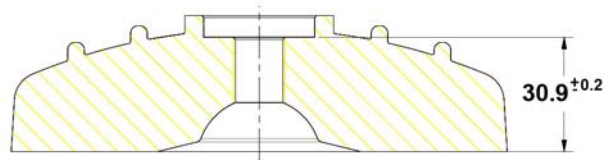
*DRAWING OF THE  
CYLINDER BASE*

VISTA CILINDRO

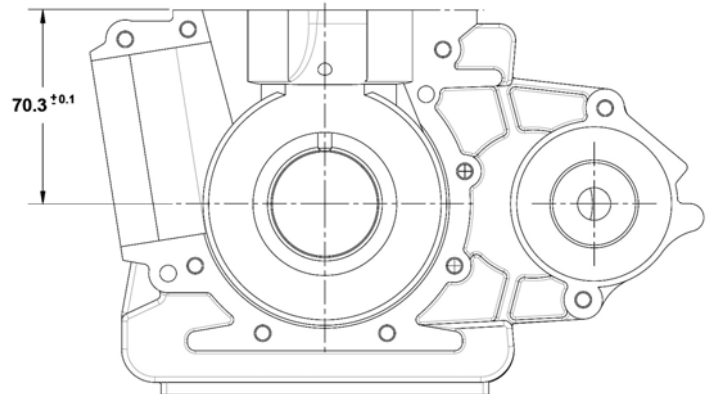
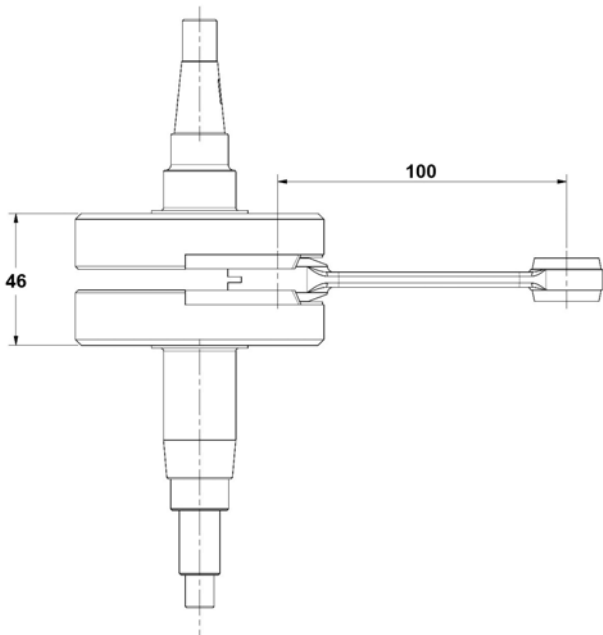
*CYLINDER SECTION  
VIEW*



DISEGNO DELLA CAMERA DI SCOPPIO	<i>DRAWING OF THE CYLINDER HEAD AND OF THE COMBUSTION CHAMBER</i>
---------------------------------	---



DISEGNO ALBERO MOTORE	<i>DRAWING OF THE CRANKSHAFT</i>	DISEGNO INTERNO CARTER MOTORE	<i>DRAWING OF THE INSIDE OF SUMP</i>
-----------------------	----------------------------------	-------------------------------	--------------------------------------



COMPONENTI FRIZIONE / CLUTCH PARTS

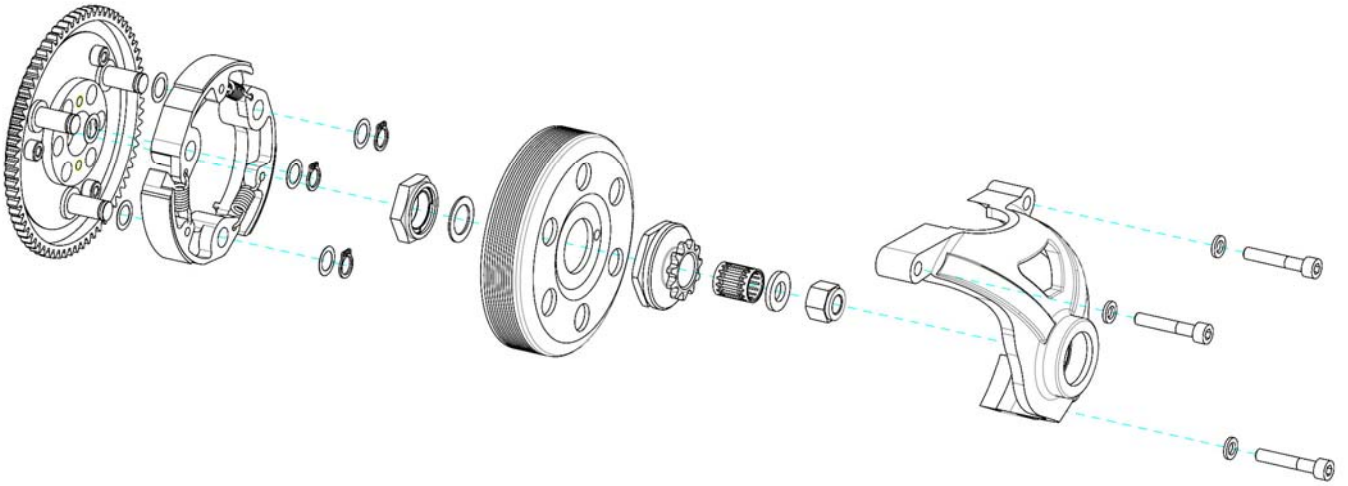
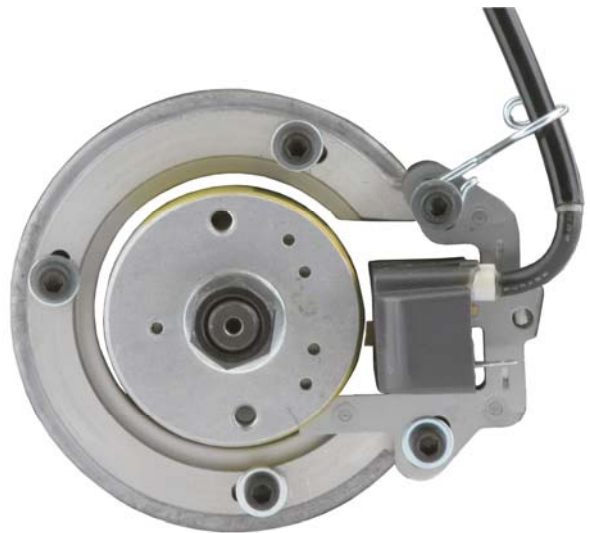


FOTO CARBURATORE

PHOTO OF THE  
CARBURETTOR

FOTO ACCENSIONE

PHOTO OF THE  
IGNITION

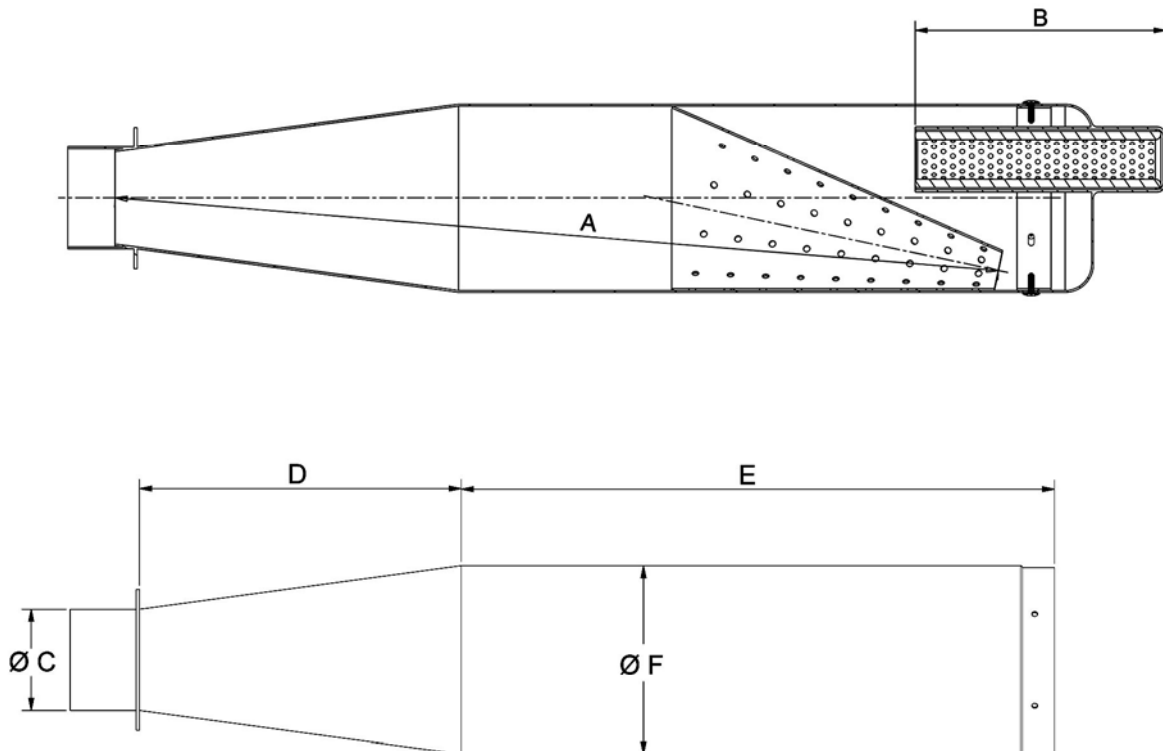


DISEGNO DELLA MARMITTA

DRAWING OF THE SILENCER AND OF ITS COMPONENTS

Spessore minimo delle pareti della marmitta 0,8mm / Minimum tickness of the wall of the exhaust silencer 0.8mm.

Peso minimo della marmitta 1,700 Kg / Minimum weight of the exhaust 1,700 Kg.



Misure / Readings:

- A: 455 mm
- B: 133 mm
- C: 54 mm Øext.
- D: 170 mm
- E: 315 mm
- F: 100 mm Øext.

Tolleranze / Rough dimensions

- Fino a - up to 25mm → ±1mm
- Da..a..- from to 25-60mm → ±1,5mm
- Più di - more than 60mm → ±3mm